



KILLARK®

INSTALLATION, OPERATION & MAINTENANCE DATA SHEET

“KFWB--SLIPFITTER 2”-2.5” HEAVYDUTY”



KFWB--SLIPFITTER 2-2.5” HEAVYDUTY

CAUTION:

Before installing, make sure you are compliant with area classifications, failure to do so may result in bodily injury, death and property damage. Do not attempt installation until you are familiar with the following procedures. All installation must comply with the applicable Electrical Code.

Make sure that the circuit is de-energized before starting installation or maintenance.

Verify that the installation is grounded. Failure to ground will create electrical shock hazards, which can cause serious injury and or death.

Technical information, advice and recommendations contained in these documents is based upon information that Killark believes to be reliable. All the information and advice contained in these documents is intended for use only by persons having been trained and possessing the requisite skill and know-how and to be used by such persons only at their own discretion and risk. The nature of these instructions is informative only and does not cover all of the details, variations or combinations in which this equipment may be used, its storage, delivery, installation, check out, safe operation and maintenance. Since conditions of use of the product are outside of the care, custody and control of Killark, the purchaser should determine the suitability of the product for his intended use, and assumes all risk and liability whatsoever in connection therewith.

KILLARK®



3940 Dr. Martin Luther King Drive
St. Louis, MO 63113

P/N KIL00921424 FORM NO. K1424 12/13 ERO-6-103-13

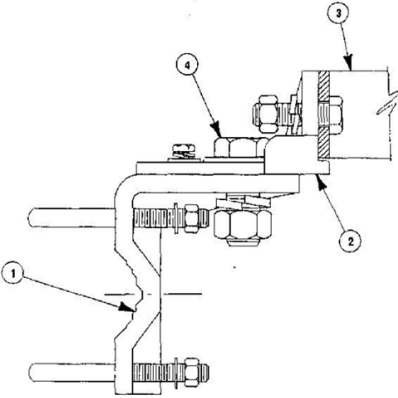
Page 1 of 2

Before installing, be sure to read and be familiar with the following instruction procedures. All installations must comply with applicable local, National Electrical Codes and/or Canadian Electrical Code.

1. DIRECTIONS FOR INSTALLATION

WARNING: Electrical power supply **MUST BE OFF** Before and during installation and maintenance.

1. Assemble bracket (1) to bracket (2) finger tight with $\frac{3}{4}$ " diameter bolt (4), lock washer and nut.
2. Bracket Assembly mounting:
For Vertical or Horizontal Pole Mounting: Secure bracket assembly with $\frac{3}{8}$ " U-bolt clamps, lock washers and nuts.
For Wall Mounting: Secure bracket assembly with four $\frac{3}{8}$ " dia. hardware (by others).
3. Secure fixture yoke (3) (by others) to bracket assembly with two $\frac{1}{2}$ " bolts, lock washers and nuts.
4. Aim fixture.
5. Install and tighten $\frac{1}{4}$ " screw, lock washer and flat washer to secure aiming position.
6. Tighten bolt (4).



KILLARK® **Chalmit**

Victor
Lighting

Vantage
Technology

RIG POWER

HAWKE
International

3940 Dr. Martin Luther King Drive
St. Louis, MO 63113

P/N KIL00921424 FORM NO. K1424 12/13 ERO-6-103-13

Page 2 of 2